



---

## BHC Meeting

November 10, 2022, 3pm

Jefferson County's Behavioral Health Consortium (BHC) is funded by  
HRSA's RCORP-Implementation Grant through August 2023

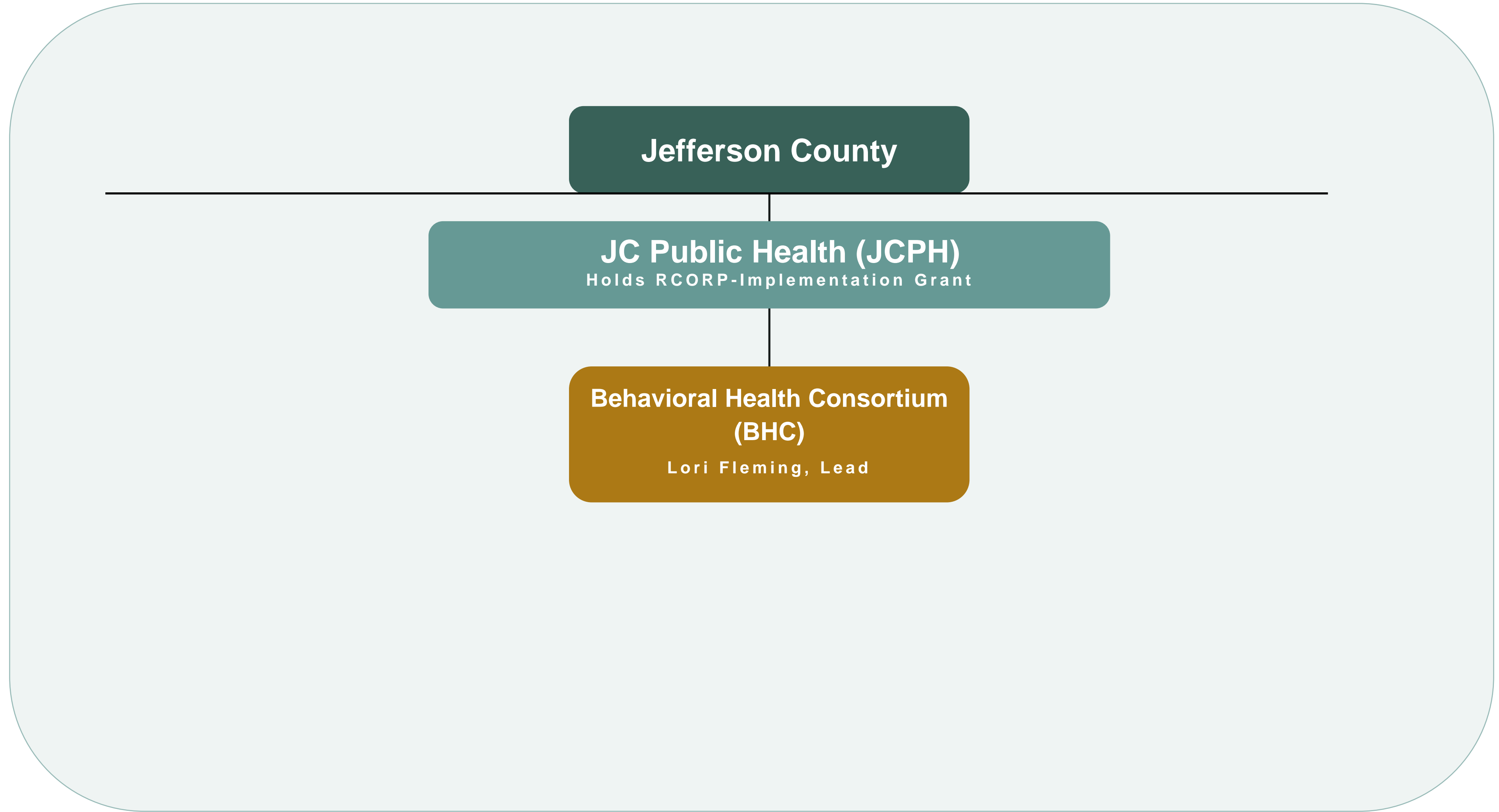


# Agenda – 11/10/22 BHC Meeting

- Introductions & Updates – 15 Minutes
- BHC Reporting Structure
- Grant Spending /Final Grant Year's Allocation – 15 minutes
- Group Feedback: Milestones and Post Grant Vision - 15 minutes
- Update: BHC's Education and Outreach Efforts – 5 minutes  
- Anya Callahan
- Next Meeting: December 8, 3pm – Zoom  
- Funding Decisions for remaining budget



# Reporting Structure Update





# F O C U S

**Improve access to behavioral health services throughout Jefferson County**

**Prevention**

**Treatment**

**Recovery**

## Jefferson County's

### Behavioral Health Consortium Members

*Alcohol & Drug Abuse Institute*

*Believe In Recovery/Gateway to Freedom*

*Discovery Behavioral Healthcare / Safe Harbor*

*East Jefferson Fire Rescue*

*Jefferson County EMS Council*

*Jefferson County Prosecutor's Office*

*Jefferson County Public Health*

*Jefferson County Public Defender's Office*

*Jefferson County Sheriff's Office / Jail*

*Jefferson Healthcare*

*OlyCAP*

*OWL360 – Pfeiffer House/Nest*

*Port Townsend Police Department*

*Recovery Cafe*

*Ad Hoc and Alternate Members: Denise Banker, Community Health Director, JCPH; Dave Fortino, Jail Superintendent; Pete Brummel, EJFR; Patrick Johnson, NAMI; Jud Haynes, PTPD Navigator; Chief Tim Manly, Brinnon Fire Dept; Adam York, JHC Data; Darcy Fogarty, Recovery Community; Chief Tim McKern, Quilcene Fire Dept; Anya Callahan, Comm/Engagement, USAWA; Anna McEnery, JCPH, BH Coordinator; Matt Ready, Hospital Commissioner; Greg Brotherton, County Commissioner; Jolene Kron, Salish Behavioral Health-Administration Services; Apple Martine, JCPH Community Health Director; Cassidy Chang, Pop. Health Coordinator, JHC;*



BEHEALTHYJEFFERSON.COM



# Required Core Grant Activities



## Prevention

- P.1** Linguistic / Cultural Efforts to Reduce Stigma  
Increase Naloxone Access and Training
- P.2** Support Drug Take Back Programs
- P.3** Support School Community Prevention Programs
- P.4** Improve ID/Screening for SUD/ODU; provide referrals to providers, harm reduction, early intervention, treatment, and support
- P.5** Improve ID/Screening for SUD/ODU; provide referrals to providers, harm reduction, early intervention, treatment, and support

## Treatment

- T.1** Screen/Provide/Refer Patients with infectious implications  
Recruit/Train/Mentor interdisciplinary teams of SUD/ODU Clinical and Service Providers
- T.2** Recruit/Train/Mentor interdisciplinary teams of SUD/ODU Clinical and Service Providers
- T.3** Increase # of providers and social service professionals who treat/identify SUD/ODU through professional development and recruiting incentives
- T.4** Reduce Treatment Barriers
- T.5** Improve ID/Screening for SUD/ODU; provide referrals to providers, harm reduction, early intervention, treatment, and support
- T.6** Train Providers and Admin staff to optimize reimbursement for treatment through proper coding/billing across insurances to ensure service provider sustainability
- T.7** Enable individuals, family and caregivers to find, access and navigate treatment for SUD/ODU as well as home and community-based services and social supports

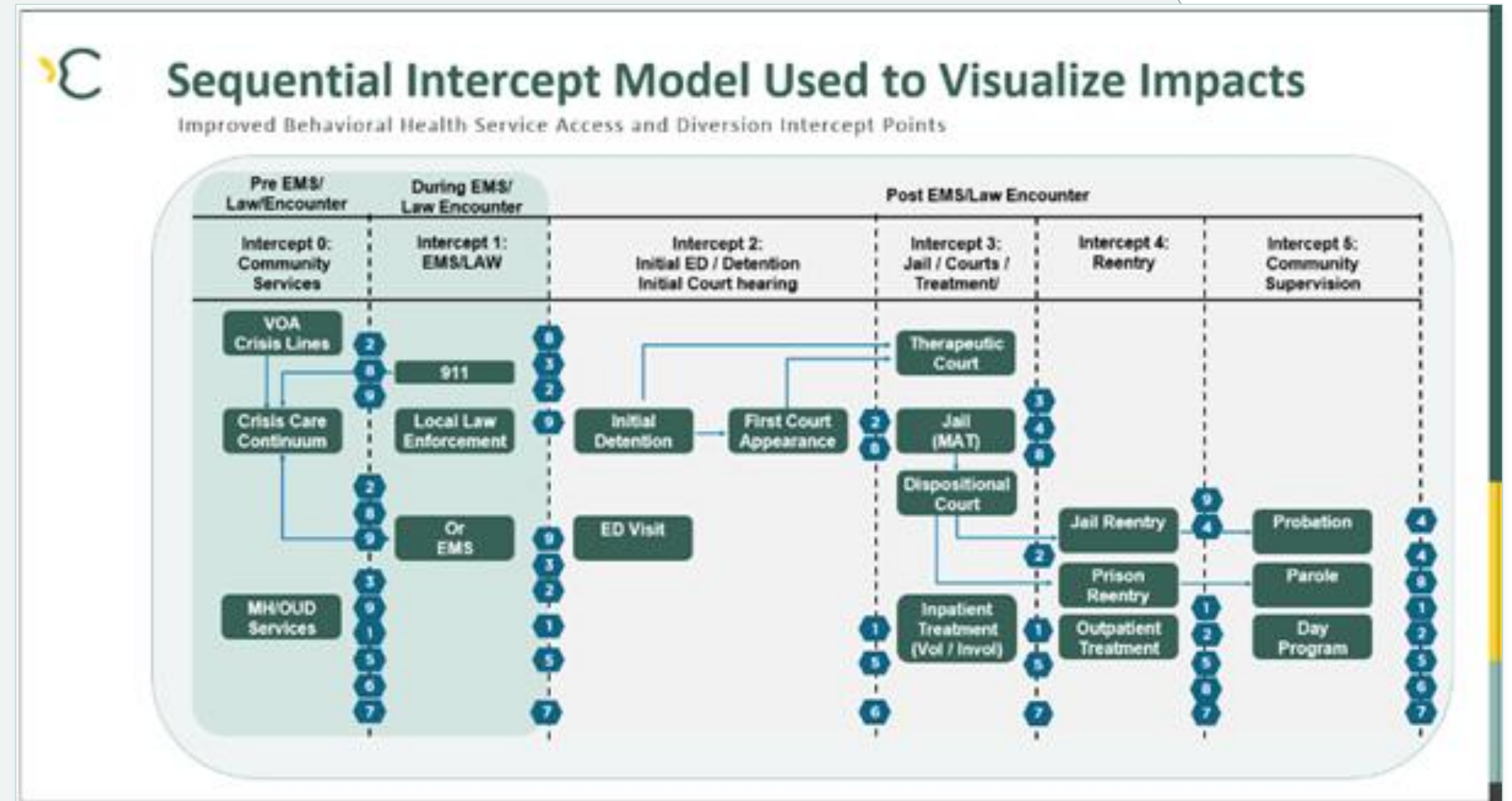
## Recovery

- P.1** Train Providers and Admin staff to optimize reimbursement for treatment through proper coding/billing across insurances to ensure service provider sustainability
- P.2** Enable individuals, family and caregivers to find, access and navigate treatment for SUD/ODU as well as home and community-based services and social supports
- P.3** Support development of recovery communities, recovery coaches, and recovery community organizations to expand the availability of and access to recovery support services



# BHC Projects Update - November 2022

- ✓ 1. Increase Integration of Behavioral Health Therapy Provider and MAT Prescription
- ✓ 2. Gather/Analyze collective Data to provide baseline and feedback to measures implemented
- ✓ 3. Develop/maintain [online](#)/printed Resource Directory
- ✓ 4. Improve Jail-to-Community service connection
- ✓ 5. Fund Recovery Café for peer network development and recovery/prevention environment
- ✓ 6. Extend Harm Reduction Program Services into South County
- ✓ 7. Execute communication/education/integration efforts to address regional stigma
- ✓ 8. Coordinate and optimize navigator and care coordination services
- ✓ 9. Initiate collective case management for high utilizers of law enforcement/Hospital/EMS services





# RCORP-I Program Funding Allocation

PROGRAM	FUNDED
	09/01/2020 - 08/2023
RECOVERY CAFÉ / DOVE HOUSE	\$155,076.72
OWL 360 - PFEIFFER HOUSE / NEST	\$102,000.00
HFPD - DATA ANALYSIS & STRATEGY	\$ 33,940.00
ANYA CALLAHAN COMM/EDUCATION/ENGAGEMENT	\$ 20,445.00
COMMUNICATIONS WEBSITE TECH/GRAPHICS	\$ 22,000.00
SCHOOL BASED HEALTH CENTER (SBHC) YOUTH SCREENING, BRIEF INTERVENTION AND REFERRAL TO TREATMENT (YSBIRT)	\$ 6,000.00
SOUTH COUNTY HARM REDUCTION VENDING MACHINE PURCHASE AND INSTALLATION	\$ 25,000.00
<b>TOTAL ALLOCATED TO DATE</b>	<b>\$364,461.72</b>



# Funding Allocation for remaining \$100k?

PROGRAM	CONSIDER FUNDING?
<b>SUPPORT</b> for consistent Case Call / Coordination Care to address high utilizer/friendly-faces cases	
<b>ANYA CALLAHAN</b> - add 4 Community Training/Education events @ Chamber of Commerce re: Narcan/Stigma/Harm Red; Local Bar Employees - Anya/JCPH - zoom trainings/develop a co-hosted set of videos on services available in community, how to use Narcan; answer questions; etc. - Anya/JCPH - Direct outreach to the insecurely housed	
<b>OWL 360 - PFEIFFER HOUSE / NEST</b> Addresses grant P4, T3, R1  - Case/Care Manager - Develop Advocacy and Education Program - Job Training Coach - for youth	
<b>THERAPEUTIC COURT?</b>	
<b>OTHER?</b>	





# Funding Allocation for remaining \$100k?

PROGRAM	CONSIDER FUNDING?
<b>SUPPORT</b> for consistent Case Call / Coordination Care to address high utilizer/friendly-faces cases	
<b>ANYA CALLAHAN</b> - add 4 Community Training/Education events @ Chamber of Commerce re: Narcan/Stigma/Harm Red; Local Bar Employees - Anya/JCPH - zoom trainings/develop a co-hosted set of videos on services available in community, how to use Narcan; answer questions; etc. - Anya/JCPH - Direct outreach to the insecurely housed	
<b>OWL 360 - PFEIFFER HOUSE / NEST</b> Addresses grant P4, T3, R1  - Case/Care Manager - Develop Advocacy and Education Program - Job Training Coach - for youth	
<b>THERAPEUTIC COURT?</b>	
<b>OTHER?</b>	



# Feedback: Milestones and Post Grant Vision



Go to [this link](#)  
to provide feedback

## What Do You Think?

- **What about your participation in the BHC has made you Mad, Sad, or Glad?**
- **What about the BHC do you see as Valuable? What's working?**
- **What needs to be improved and how should we improve it?**
- **What would you like to see the BHC accomplish in our grant's final year to maximize the BHC's impact on improving access to behavioral health in Jefferson County?**
- **What would you like the Jefferson County BHC to be and/or do, once our current grant is completed in August 2023?**



# Education and Engagement Update



BHC

- 313 naloxone boxes distributed directly to community since April 2022
- Fentanyl strips now being distributed



# Next BHC Meeting

Thursday, December 8th, 2022

@3pm



# Acronym Sheet

**BH** – Behavioral Health

**BHC** – Behavioral Health Consortium

**CAP** – Communication Action Plan

**CHA** – Community Health Assessment

**CHIP** – Community Health Improvement Plan

**DCR** – Designated Crisis Responder

**DUI** – Driving Under the Influence

**ED** – Emergency Department

**EJFR** – East Jefferson Fire Rescue

**EMS** – Emergency Medical Services

**JCPH** – Jefferson County Public Health

**JeffCo** – Jefferson County

**JHC** – Jefferson Healthcare

**HFPD** – Health Facilities Planning & Development Consultants

**HRSA** – Health Resources and Services Administration

**ITA** – Involuntary Treatment Assessment

**MAT** – Medically Assisted Treatment

**MH** – Mental Health

**MOUD** – Medications for Opioid Use Disorder

**ODD** – Opioid Use Disorder

**PTPD** – Port Townsend Police Department

**PWUD** – People Who Use Drugs

**RHNDP-P** – Rural Health Network Development Program –  
Planning (HRSA Grant Awarded 2018-2019)

**RCORP-P** – Rural Community Opioid Response Program –  
Planning (HRSA Grant Awarded 2019-2020)

**RCORP-I** – Rural Community Opioid Response Program –  
Implementation (HRSA Grant Awarded 2020-2023)

**R.E.A.L.** – Recovery, Empowerment, Advocacy, Linkage

**SUD** – Substance Use Disorder

**TBH** – To Be Hired

**VOA** – Volunteers of America – Crisis Line

**Vol** - Voluntary

**Invol** – Involuntary