



Behavioral Health Consortium

History, Current Fund Award, Action Plan Overview





Behavioral Health Consortium (BHC)

Historical Context



History: June, 2018 – May, 2019

- Applied for and received a \$100k HRSA Rural Health Network Development Program - Planning (RHNDP-P) grant to:

Develop a Rural Health Network Program of, and with, relevant County Stakeholders

Jefferson County Public Health Vicki Kirkpatrick Director, Public Health	Jefferson Healthcare Mike Glenn Chief Executive Officer	East Jefferson Fire & Rescue Jim Walkowski, Fire Chief, Jefferson County	Discovery Behavioral Health Natalie Gray Chief Executive Officer
---	--	---	---



What Does the BHC Want to Accomplish?

Our overarching goal is to strengthen and expand SUD/ODD prevention, treatment and recovery services to enhance resident's ability to access in-county treatment and move towards recovery.



How Does the BHC Accomplish Its Mission?

By serving as a strong infrastructure between agencies, and collectively developing and executing strategic plans to:

- **Integrate MH/SUD/ODD services**
- **Optimize service and provider investments**
- **Create access to appropriate services at the appropriate time**
- **Implement evidenced-based, innovative approaches for value-based healthcare**

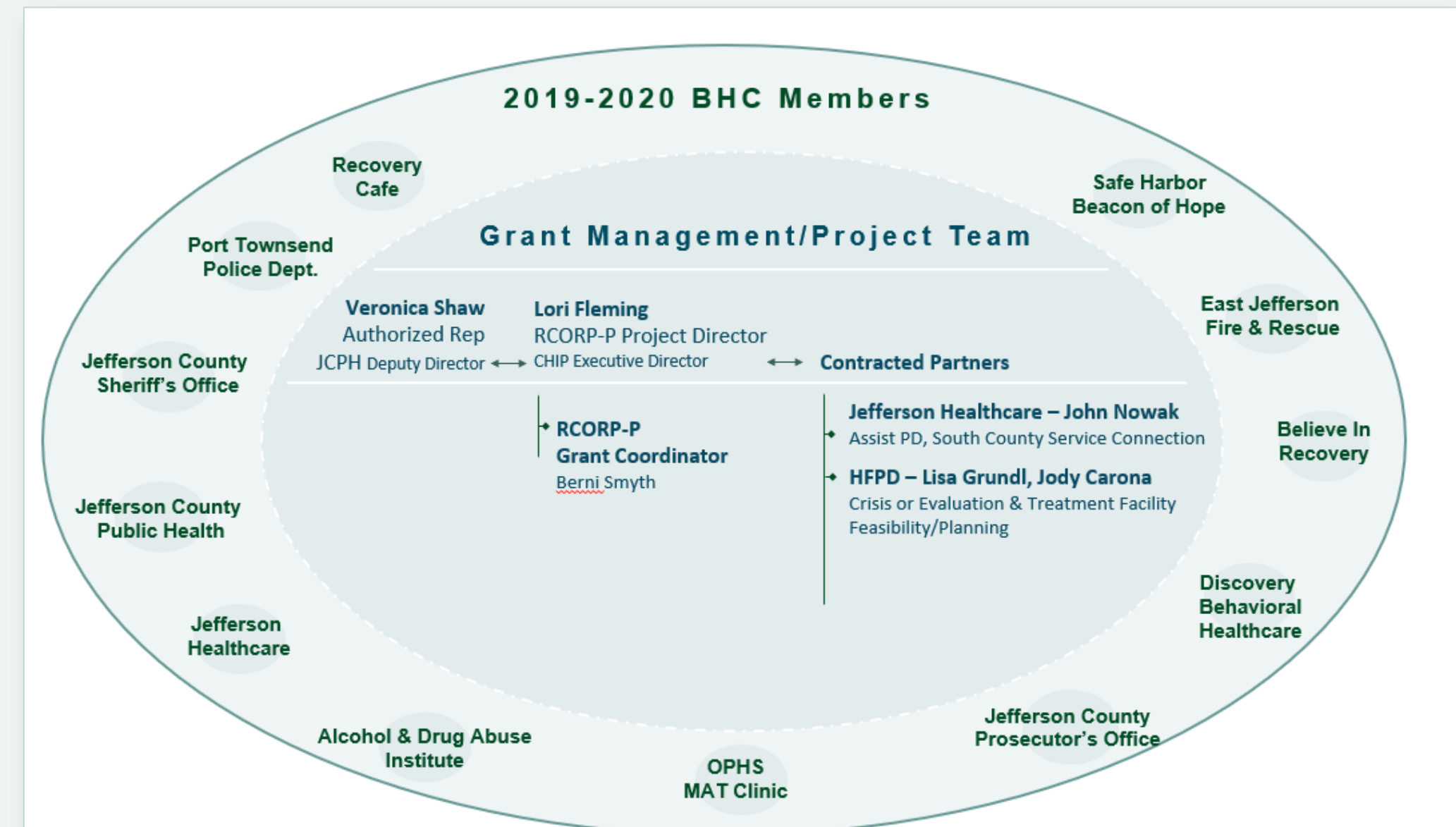


History: June 2019 – May, 2020

- Applied for and received a \$200k HRSA Rural Communities Opioid Response Program-Planning (RCORP-P)

Grant

- Expanded Consortium executed a Needs Assessment for behavioral health services that address the treatment and recovery of Jefferson County's OUD/SUD patients,
- Developed Strategic, Workforce, and Sustainability Plans; submitted required data.



BHC Alternate and AD HOC Team | Dave Fortino, Jail Superintendent; Pete Brummel, EJFR; Patrick Johnson, NAMI; Jud Haynes, PTPD Navigator; Adam York, JHC Data; Darcy Fogarty, Recovery Community; Matt Ready, Hospital Commissioner; Greg Brotherton, County Commissioner; Jolene Kron, Salish Behavioral Health-Administration Services; Apple Martine, JCPH's Community Health Director, Anna McEnery, JCPH, BH Coordinator



2019-2020's Strategic Plan Priorities

- Enhance support to Law Enforcement and Emergency Medical services for Call-Subject Navigation and Behavioral Health Service Connection
- Improve Jail-to-Community transitions
- Develop / Maintain Online/Printed Resource Directory
- Maintain Discovery Behavioral Health's Day Program
This priority evolved to:
Improve Provider/Prescriber Service Integration
- Determine feasibility of a local Crisis Stabilization Facility



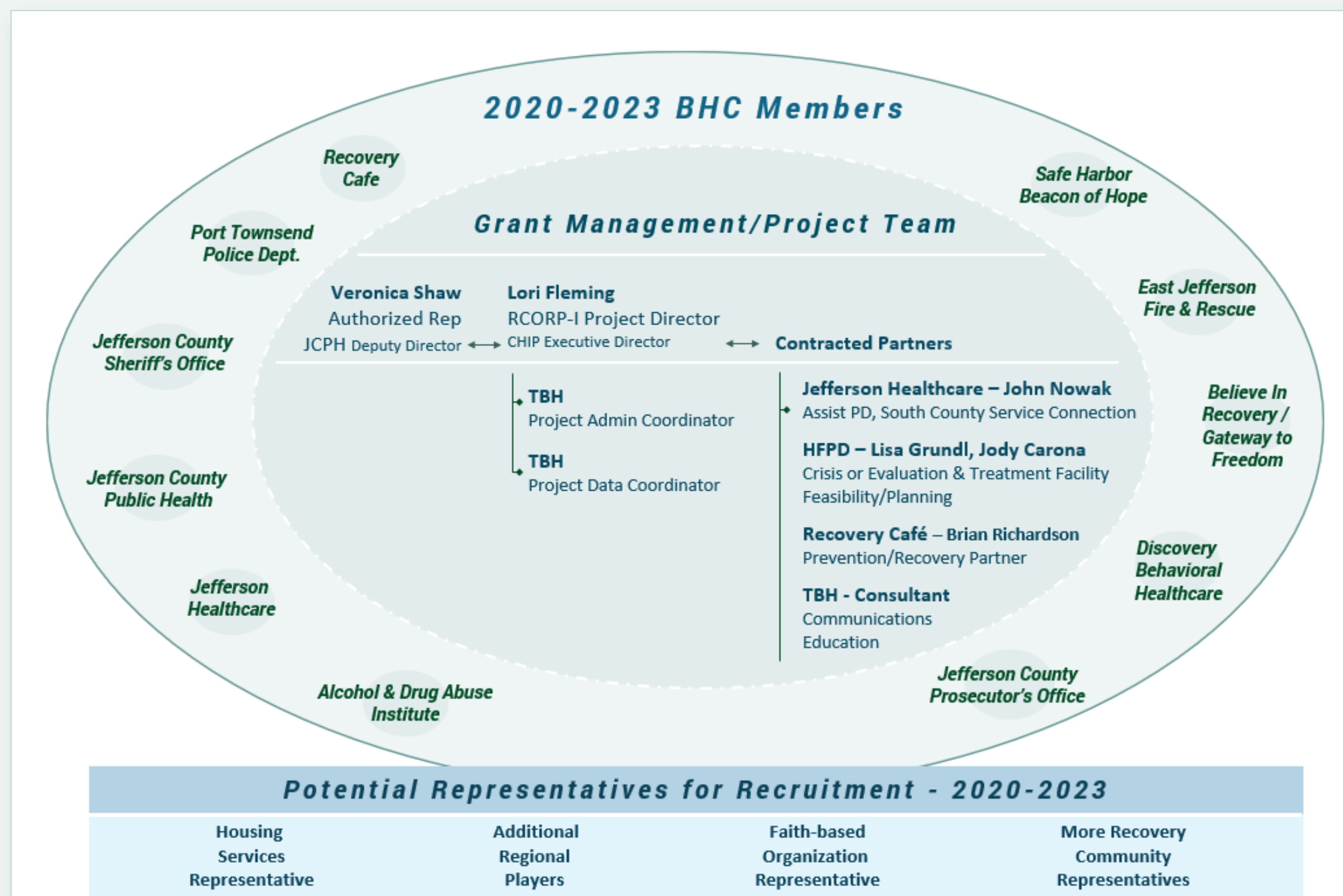
RCORP-Implementation

Overview



Current: Sept 2020 - Aug 2023 - RCORP-Implementation Grant

- Applied for and received a \$1M HRSA Rural Communities Opioid Response Program-Implementation (RCORP-I) Grant



BHC Alternate and AD HOC Team

Denise Banker, JCPH Youth Prev; Dave Fortino, Jail Superintendent; Pete Brummel, EJFR; Patrick Johnson, NAMI; Jud Haynes, PTPD Navigator; Adam York, JHC Data; Darcy Fogarty, Recovery Community; Matt Ready, Hospital Commissioner; Greg Brotherton, County Commissioner; Jolene Kron, Salish Behavioral Health-Administration Services; Apple Martine, JCPH's Community Health Director, Anna McEnergy, JCPH, BH Coordinator, Cherish Cronmiller, OlyCAP, Chief Tim McKern, Quilcene Fire Department, Nat Jacob, Public Defender's Office



RCORP-Implementation Grant

F O C U S

Improve access to behavioral health services throughout Jefferson County

Prevention

Treatment

Recovery

Jefferson County's

Behavioral Health Consortium Members

Alcohol & Drug Abuse Institute

Believe In Recovery / Gateway to Freedom

Discovery Behavioral Healthcare

East Jefferson Fire Rescue

Jefferson County Prosecutor's Office

Jefferson County Public Health

Jefferson County Sheriff's Office

Jefferson Healthcare

Port Townsend Police Department

Recovery Cafe

Safe Harbor / Beacon of Hope

Ad Hoc and Alternate Members: Denise Banker, JCPH Prevention; Dave Fortino, Jail Superintendent; Pete Brummel, EJFR; Patrick Johnson, NAMI; Jud Haynes, PTPD Navigator; Adam York, JHC Data; Darcy Fogarty, Recovery Community; , Anna McEnery, JCPH, BH Coordinator; Matt Ready, Hospital Commissioner; Greg Brotherton, County Commissioner; Jolene Kron, Salish Behavioral Health-Administration Services; Apple Martine, JCPH Community Health Director



BEHEALTHYJEFFERSON.COM



Grant-Required Core Activities



Prevention

P.1

Linguistic / Cultural Efforts to Reduce Stigma

P.2

Increase Naloxone Access and Training

P.3

Support Drug Take Back Programs

P.4

Support School Community Prevention Programs

P.5

Improve ID/Screening for SUD/OD; provide referrals to providers, harm reduction, early intervention, treatment, and support

Treatment

T.1

Screen/Provide/Refer Patients with infectious implications

T.2

Recruit/Train/Mentor interdisciplinary teams of SUD/OD Clinical and Service Providers

T.3

Increase # of providers and social service professionals who treat/identify SUD/OD through professional development and recruiting incentives

T.4

Reduce Treatment Barriers

T.5

Strengthen collaboration with law enforcement and first responders to enhance response and emergency treatment to those with SUD/OD.

T.6

Train Providers and Admin staff to optimize reimbursement for treatment through proper coding/billing across insurances to ensure service provider sustainability

T.7

Enable individuals, family and caregivers to find, access and navigate treatment for SUD/OD as well as home and community based services and social supports

Recovery

P.1

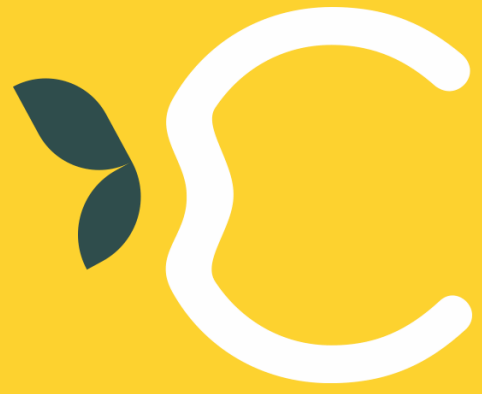
Enhance discharge coordination from inpatient treatment facilities and/or criminal justice system – linkages to home and community-based services, social supports.

P.2

Enable individuals, family and caregivers to find, access and navigate treatment for SUD/OD as well as home and community based services and social supports

P.3

Support development of recovery communities, recovery coaches, and recovery community organizations to expand the availability of and access to recovery support services



BHC Team Additions – Nov '20

Cherish Cronmiller, OlyCAP

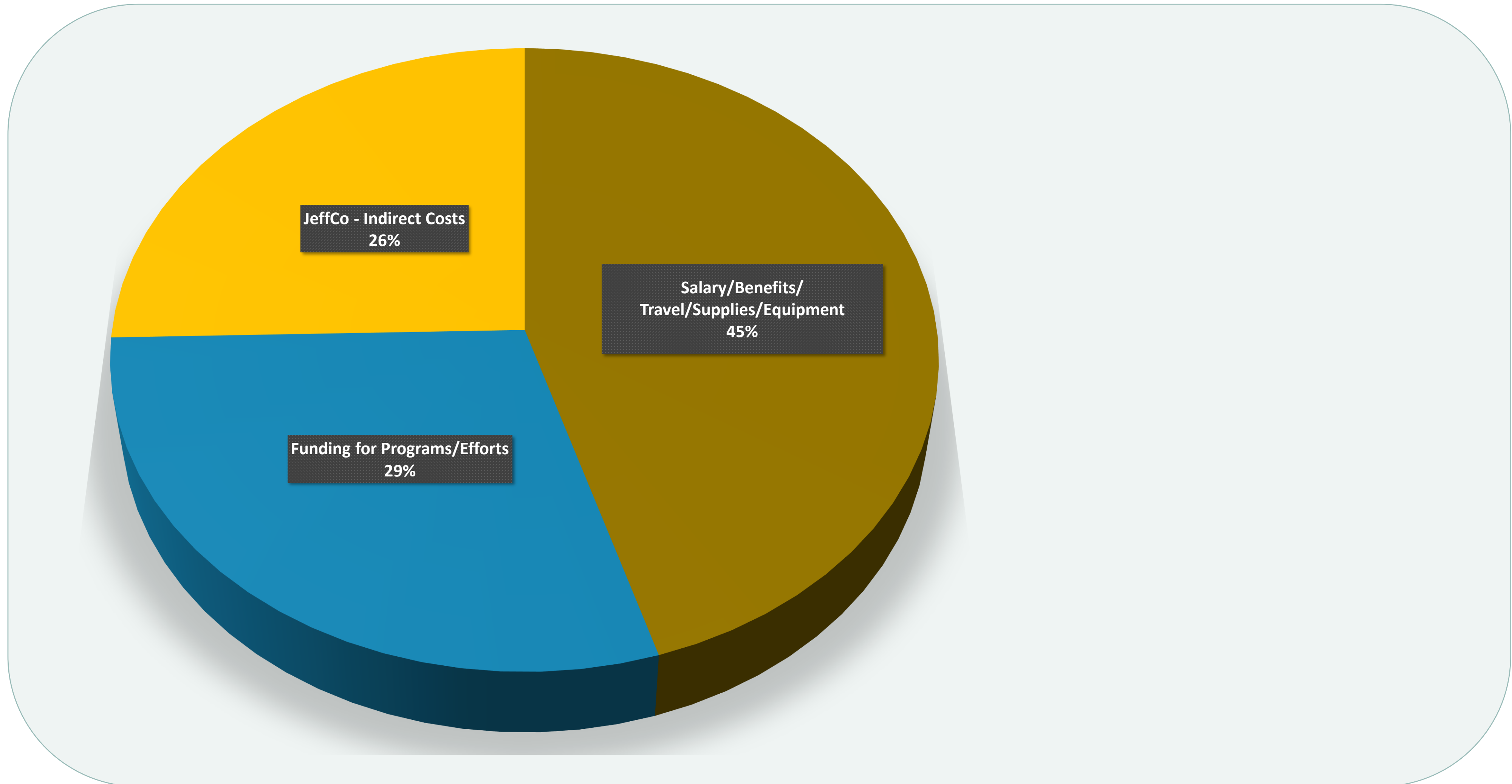
Nat Jacob, Public Defender

Chief McKern, Quilcene Fire

Denise Banker, JCPH, Youth Prevention

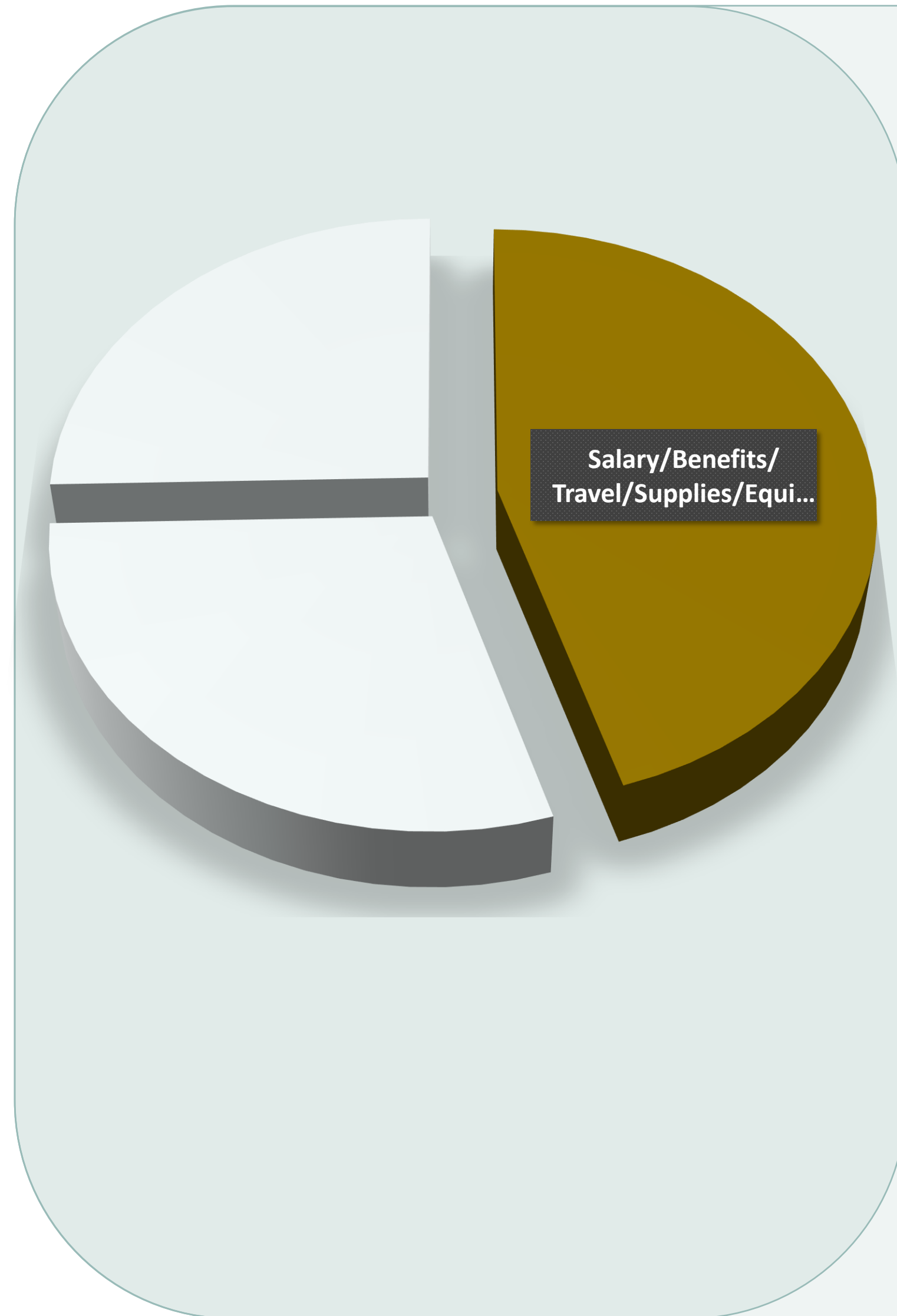


RCORP-Implementation Fund Allocation





RCORP-Implementation Fund Allocation

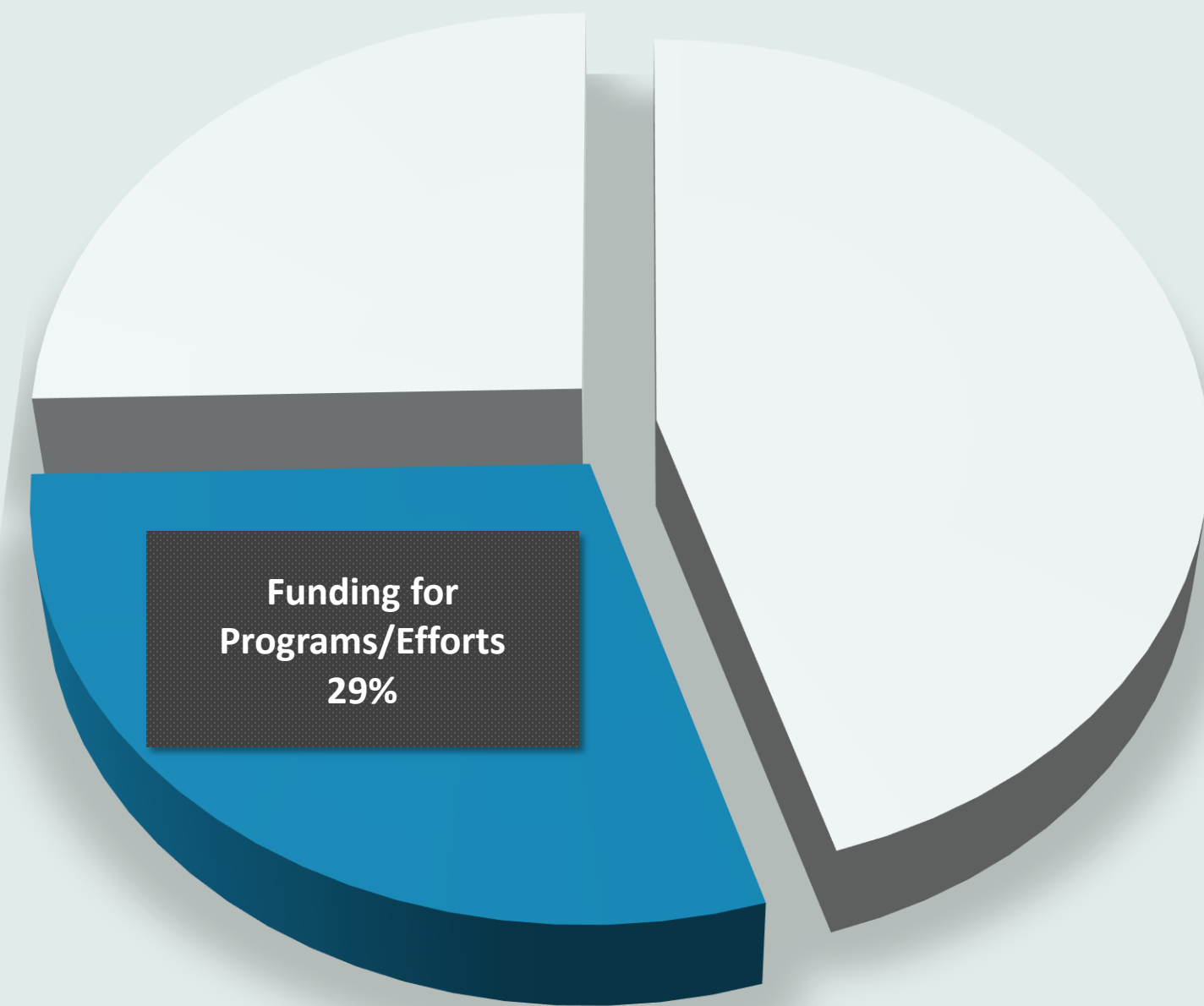


Salary/Benefits/Required Travel/Equipment/Supplies

- > ~\$465k over three years –
 - Proj Dir/Admin and Data Coordinator; Equipment
 - 3 required trips for two people to WA DC
- > Communicate / Facilitate / Lead one-on-one and Consortium-wide work to perceive, motivate, build, realize and broadcast collaborations, data-gathering, insight / action development and execution into solutions and required grant deliverables
- > Develop, finalize and monitor contract vehicles to deliver grant funding to our community's programs
- > Represent BHC @ relevant national, regional, and county meetings to keep the BHC's vision and actions visible, relevant and facilitated at those tables
- > Assists BHC Members to represent their adjacent and overlapping efforts clearly through PR, presentations, etc.



RCORP-Implementation Fund Allocation



Prevention and Recovery

- > \$105k over three years to Recovery Cafe
Assist BHC to meet grant's requirements to provide an environment conducive to recovery, provide Recovery Peer support and oversee the development of a peer network

Treatment

- > \$48k over three years to Harm Reduction and and Wraparound Services in South Jefferson County
- Treatment
Assist BHC to meet grant requirements to provide access to services and increased connection to those impacted by SUD/ODU in hard-to-reach rural areas

Intersection of Prevention, Treatment, and Recovery

- > \$30k over three years to HFPD to determine feasibility of a Crisis Stabilization Facility
- > \$45k over three years for Communication, Education an Integration Plan and execution to address stigma associated with addiction and mental illness



Current RCORP-I Grant - Funding Highlights

Arena	Funding Focus	Benefit
PREVENTION	Support and enhance the prevention capacity of the newly established local Recovery Café through partial funding for this grant partner to assist BHC to meet grant targets in the prevention arena.	Responds to Needs Assessment data that identifies prevention challenges of social isolation, access to services, and low income. Support will ensure a foundation for relapse prevention through community and connections to social, medical, housing and behavioral health service to the most vulnerable members of our community and will seed Peer Network development.
RECOVERY	Support the local Recovery Café as a grant partner to assist the BHC to meet grant targets in the recovery arena.	Provides start-up sustainability for the Recovery Café that is opening in 2020. The facility will anchor a nexus point for recovery-community, and social, medical and behavioral health service connections for our recovery community members.

YEAR 1	YEAR 2	YEAR 3
\$35,000	\$35,000	\$35,000



Current RCORP-I Grant - Funding Highlights

TREATMENT	Bring Syringe Exchange Program and Wraparound Services to South Jefferson County.	Addresses data that identified lack of transportation from far reaches of county as a major barrier for some county residents to connect with SUD/ODU related services. Intend this SEP as a new intercept point to connect people to services.
------------------	--	---

YEAR 1	YEAR 2	YEAR 3
\$16,066	\$16,066	\$16,066



Current RCORP-I Grant - Funding Highlights

COMMUNICATION, EDUCATION & INTEGRATION

Engage topical expert(s) in the **development of a master communications, education and integration plan to address stigma** associated with addiction and mental illness for Grant Team and BHC Members to execute.

Addresses the intersection of prevention, treatment and recovery, where palpable prejudice and discrimination at various community levels leads to feelings of hopelessness and shame in those struggling to cope, creating a barrier to service expansion, diagnosis, and treatment.

YEAR 1	YEAR 2	YEAR 3
\$10,000	\$15,000	\$20,000



Current RCORP-I Grant - Funding Highlights

FACILITY FEASIBILITY & POTENTIAL IMPLEMENTATION	Retain HFPD Consultants for services to determine feasibility, and if feasible, assist in the development, of a local Crisis Stabilization or Evaluation and Treatment Facility in the County.	Supports an ongoing effort to consistently provide enhanced, local services, rather than jail or ED, for those in crisis in our county by studying the feasibility of a “placed-based” inpatient resource for crisis stabilization, such as a Crisis Stabilization Center (or equivalent solution) in Jefferson County.
--	---	---

YEAR 1	YEAR 2	YEAR 3
\$10,000	\$10,000	\$10,000



RCORP-Implementation Fund Allocation



Indirect Costs for County to administer RCORP-I grant

> \$247k over three years

This is to certify that I have reviewed the indirect cost rate proposal submitted herewith and to the best of my knowledge and belief:

(1) All costs included in this proposal 01/01/2020 to establish billing or final indirect costs rates for January 1, 2020 through December 31, 2020 are allowable in accordance with the requirements of the Federal award(s) to which they apply and OMB Circular A 87, "Cost Principles for State, Local, and Indian Tribal Governments." Unallowable costs have been adjusted for in allocating costs as indicated in the cost allocation plan.

(2) All costs included in this proposal are properly allocable to Federal awards on the basis of a beneficial or causal relationship between the expenses incurred and the agreements to which they are allocated in accordance with applicable requirements. Further, the same costs that have been treated as indirect costs have not been claimed as direct costs. Similar types of costs have been accounted for consistently and the Federal Government will be notified of any accounting changes that would affect the predetermined rate.

I declare that the foregoing is true and correct.

Governmental Unit: Jefferson County Public Health

Signature: Veronica
Digitally signed by Veronica
DN: cn=Veronica, o=Public Health,
email=veronica@co.jefferson.wa.us, c=US
Date: 2020.03.31 17:10:50 -0700

Name of Official: Veronica K. Shaw

Title: Deputy Director

Date of Execution: 01/01/2020



R-CORP-I Action Plan

Quick Look at Key Projects

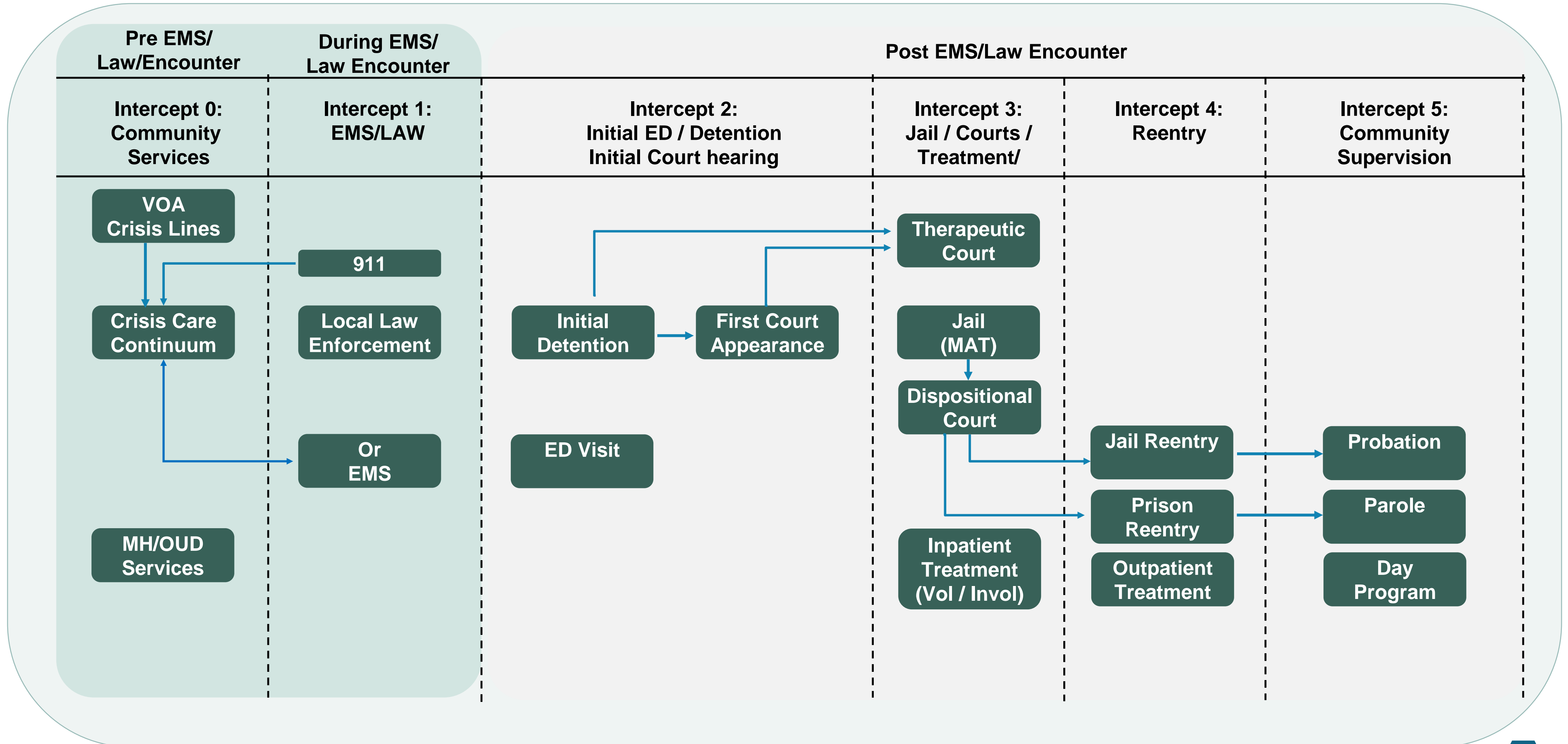


		Year 1 RCORP-I Grant Deliverables													
		Qtrly Rpt		Qtrly Rpt		6 Mos PIMS		Qtrly Rpt		Qtrly Rpt		6 Mos PIMS		Year 1 Sustainability	
		Due 12/15/20		Due 03/15/21		Due 03/15/21		Due 06/15/21		Due 09/15/21		Due 09/15/21		Due 9/15/21	
		RE: 9/30-11/30/20		RE: 12/01 -2/28/21		9/01/20 - 2/28/21		03/01-5/31/21		6/01-8/31/21		03/01-8/31/21			
Organization	Contact	Contributes	Complete	Contributes	Complete	Contributes	Complete	Contributes	Complete	Contributes	Complete	Contributes	Complete	Contributes	Complete
JCPH	Martine	x		x		x		x		x		x		x	
JHC	Nowak	x		x		x		x		x		x		x	
DBH	Novelli	x		x		x		x		x		x		x	
EJFR	Brummel	x		x		x		x		x		x		x	
JSCO/Jail	Fortino	x		x		x		x		x		x		x	
PTPD	Haynes	x		x		x		x		x		x		x	
SH/BoH	Kessler	x		x		x		x		x		x		x	
BiR/GtF	Caudill	x		x		x		x		x		x		x	
JCPO	Kennedy	x		x		x		x		x		x		x	
Recovery Café	Richardson	x		x		x		x		x		x		x	
ADAI	Rey-Thomas	x		x		x		x		x		x		x	
Youth Prev	Banker	x		x				x		x				x	
NAMI	Johnson	x		x				x		x				x	
Hospital	Wharton	x		x				x		x				x	
County	Brotherton	x		x				x		x				x	
Hospital	Fortino	x		x				x		x				x	
SBH-ASO	Kron	x		x				x		x				x	
BHAC	McEnery	x		x				x		x				x	



Sequential Intercept Model Used to Visualize Impacts

Improved Behavioral Health Service Access and Diversion Intercept Points





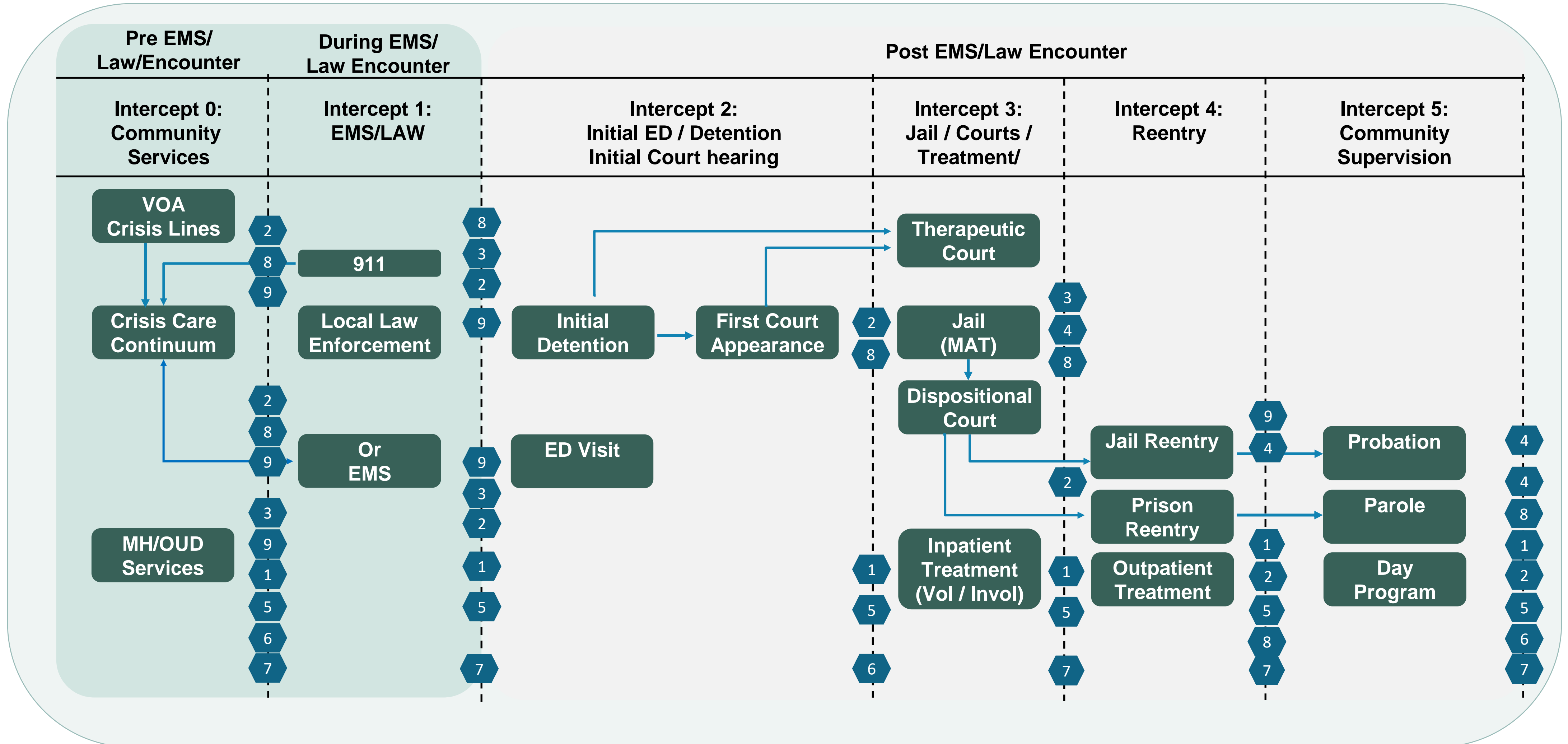
RCORP-I Grant – Overview of BHC Strategic Actions

1. Provider/Prescriber Integration
2. Develop Crisis Stabilization Center Feasibility and, if appropriate, Implementation Plan
3. Maintain Online/Printed Resource Directory
4. Improve Jail-to-Community Service Connection
5. Support Recovery Café for Peer Network Development and recovery/prevention environment to support prevention and recovery for those on their recovery journey
6. Initiate a Harm Reduction Program in South County, coordinate with Mason County
7. Communication/Education/Integration to address stigma on both sides of county line
8. Coordinate and optimize/add Navigator and Care Coordination Services
9. Initiate Friendly Face Program for collective case management for high utilizers of Law Enforcement, Emergency Responder, Emergency Department and Jail services



Sequential Intercept Model Used to Visualize Impacts

Improved Behavioral Health Service Access and Diversion Intercept Points





Strategic Project Effort Start-up Timeline

Projects and project timeline initiation points have been updated to reflect adjustments and additions that have taken place since the initial Strategic Plan BHC Members developed during the BHC's 2019-2020 Strategic Planning effort.

		RCORP-I Low Capital Projects Timeline Overview			
		Sep-Nov '20	Dec -20 -Feb '21	Mar - May '21	Jun - Aug '21
Project	Lead/Players	Q4 '20	Q1 '21	Q2 '21	Q3'21
1. Provider/Prescriber Integration	Grant Team BHC Members	[Yellow bar spanning Q4 '20, Q1 '21, Q2 '21, and Q3'21]			
2. Develop Crisis Stabilization Center Feasibility and, if appropriate, Implementation Plan	Grant Team BHC Members	[Yellow bar spanning Q4 '20, Q1 '21, Q2 '21, and Q3'21]			
3. Maintain Online/Printed Resource Directory	Recovery Café Grant Team	[Yellow bar spanning Q4 '20, Q1 '21, Q2 '21, and Q3'21]			
4. Improve Jail-to-Community Service Connection	Fortino/Caudill Grant Team		[Yellow bar spanning Q1 '21, Q2 '21, and Q3'21]		
5. Peer Network Development and recovery/prevention environment to support prevention and recovery for those on their recovery journey	Recovery Café Grant Team BHC		[Yellow bar spanning Q1 '21, Q2 '21, and Q3'21]		
6. Build Harm Reduction effort in South County	Grant Team BHC Members		[Yellow bar spanning Q1 '21, Q2 '21, and Q3'21]		
7. Communication/Education/Integration Plan/Execute to address stigma on both sides of county line	Grant Team Consultant BHC Members		[Yellow bar spanning Q1 '21, Q2 '21, and Q3'21]		
8. Coordinate/Optimize/Add Navigator and Care Coordination Services	Grant Team MHFR BHC Members			[Yellow bar spanning Q2 '21 and Q3'21]	
9. Friendly Face Program: Collective Case Management for high utilizers of Law Enforcement, Emergency Responder, Emergency Department an Jail services	Grant Team MHFR BHC Members				[Yellow bar in Q3'21]



BHC Sustainability

Notable Opportunities



Opportunity: Sustainability in the Face of Leadership Transitions

PROBLEM STATEMENT #1 ADDRESSING THE PROGRAM'S ENVIRONMENTAL SUSTAINABILITY

Law Enforcement, First Responder, and County Behavioral Health Agency services program champions and contributors have recently vacated their leadership positions for retirement or other job opportunities, leaving the BHC at risk for a lack of depth in understanding and commitment where credible, respected and powerful support and contribution once existed. For the purpose of this document the new incumbent in each of these positions will be referred to as “successors”.

GOAL 1: A BHC-led behavioral health service access expansion program with strong champions, leadership who ably support the BHC's ability to garner strong public support and generate relevant monetary resources.

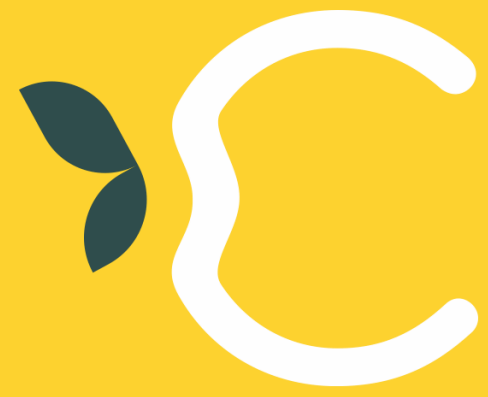
OBJECTIVE 1: Integrate successors at the Law Enforcement, First Responder and County Behavioral Health Agency Services into the existing BHC cultural norms so they can be motivated BHC program champions and contributors within their agencies, at the various stakeholder tables they attend, and throughout the community.



Opportunity: Integrate multiple stakeholder/stakeholder group efforts

BH-Relevant Funding / Efforts

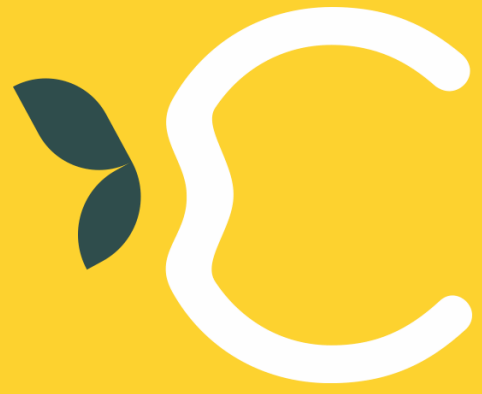
- ICC Human Services – COVID-related Funding Projects
- RSAT Grant – Jail Treatment / Aftercare
- WASPC Grant – County Navigator



BHC's RCORP-I Grant Supports CHIP's Mission

- **Generates a common language between siloed stakeholders**
- **A table with current, informed insight and community purview**
- **Optimized collective action toward the build-out of a united blueprint**





We appreciate your support for CHIP's work

We are grateful to continue this work with your support and invite your feedback on what has been presented today.





Questions or Comments?



Thank You



Acronym Sheet

BH – Behavioral Health

BHC – Behavioral Health Consortium

CHIP – Community Health Improvement Plan

DUI – Driving Under the Influence

ED – Emergency Department

EJFR – East Jefferson Fire Rescue

EMS – Emergency Medical Services

JCPH – Jefferson County Public Health

JeffCo – Jefferson County

JHC – Jefferson Healthcare

HFPD – Health Facilities Planning and
Development Consultants

HRSA – Health Resources and Services
Administration

MAT – Medically Assisted Treatment

MH – Mental Health

ODU – Opioid Use Disorder

PTPD – Port Townsend Police Department

RHNDP-P – Rural Health Network Development
Program – Planning

RCORP-P – Rural Community Opioid Response
Program – Planning

RCORP-I – Rural Community Opioid Response
Program – Implementation

SUD – Substance Use Disorder

TBH – To Be Hired

VOA – Volunteers of America – Crisis Line

Vol - Voluntary

Invol – Involuntary