



CHIP Overview

Presented to Board of Health Members

February 17, 2022



Background Sketch

- A CHIP Partnership (JHC, JCPH and City of Port Townsend) was formalized in an ILA, and was active from 2018 through July of 2019
- The execution of the 2016 CHIP has been underway since 2018.
- The CHIP-led Behavioral Health Consortium (BHC) was initiated in 2018 and has been underwritten to date with \$1.3M grant funding, procured by CHIP to address the 2016 priority to improve access to Jefferson County's Behavioral Health services.
- 2019-2020: Completion of an update to the 2014 CHA.
- 2021: Development of strategic frameworks was initiated to address 2019 CHA results.



CHIP Plan Work - 2018 - 2022

CHIP: Led 2019 Community Health Assessment (CHA) and Community Health Improvement Plan Development

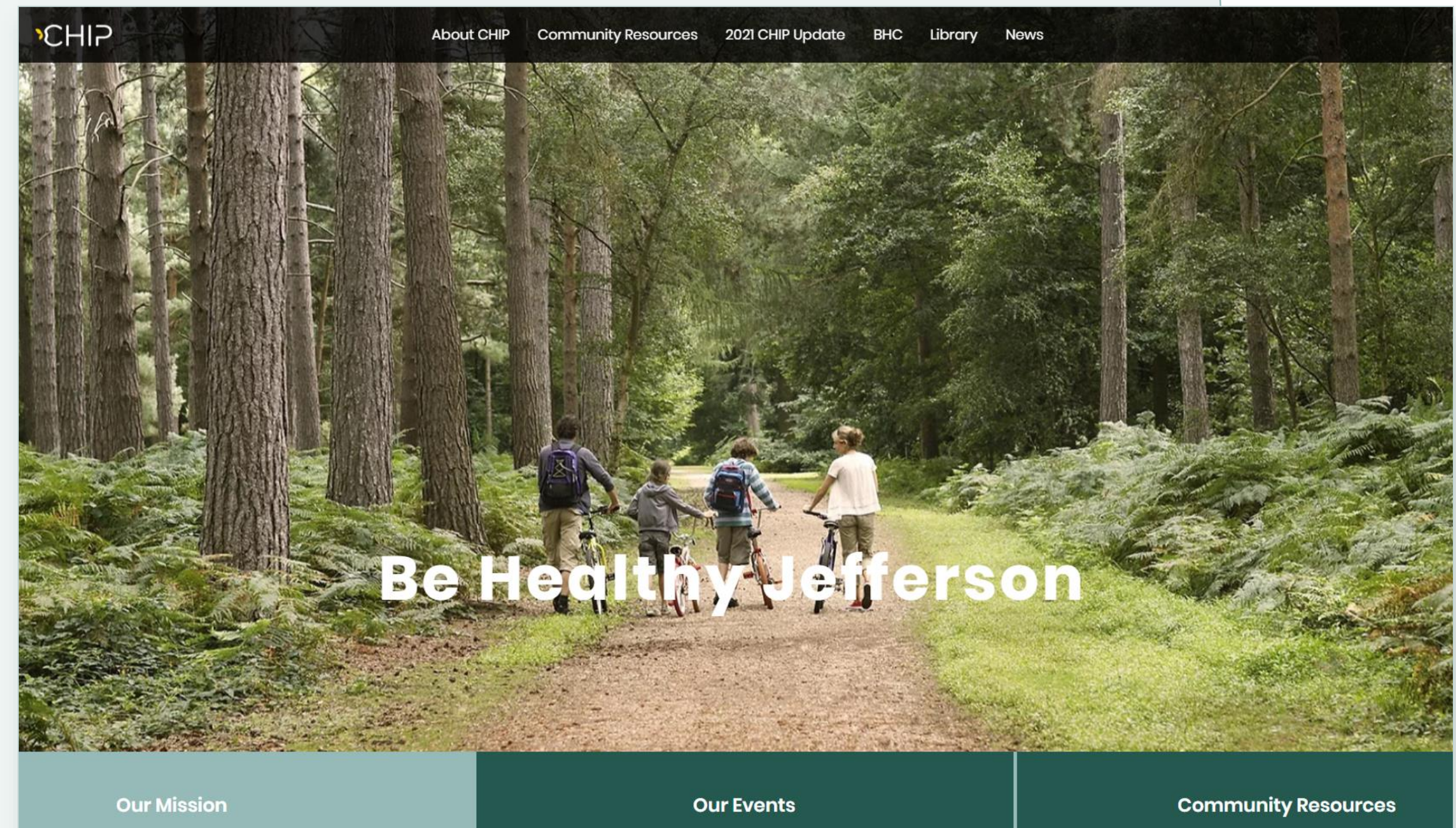
- Ongoing 2016 Strategic Plan execution and evolution
- 2019's CHA - a collection, synthesis, communication and update of the quantitative and qualitative data that provide insight to our community's health.
- 2021 Strategic Plan Update development with a collective of agencies, organizations and community advocates who prioritize addressing the insights derived from the CHA process.
- Led RFP Panel and developed presentations with resulting funding recommendations in [January 2021](#) and [September 2021](#) to the Affordable Housing Taskforce's and Joint Board





Current CHIP Development Effort

- The 2021 CHIP Update efforts are documented on CHIP's [BehealthyJefferson website](#).
- The [Youth](#), [Working](#), and [Older](#) age-band teams are populated by relevant agency, organization and community stakeholders and advocates who have developed strategic frameworks, that when completed/approved, will serve as a roadmap to improve our Community's Health.





CHIP Age-Band Workgroup – Current Goals

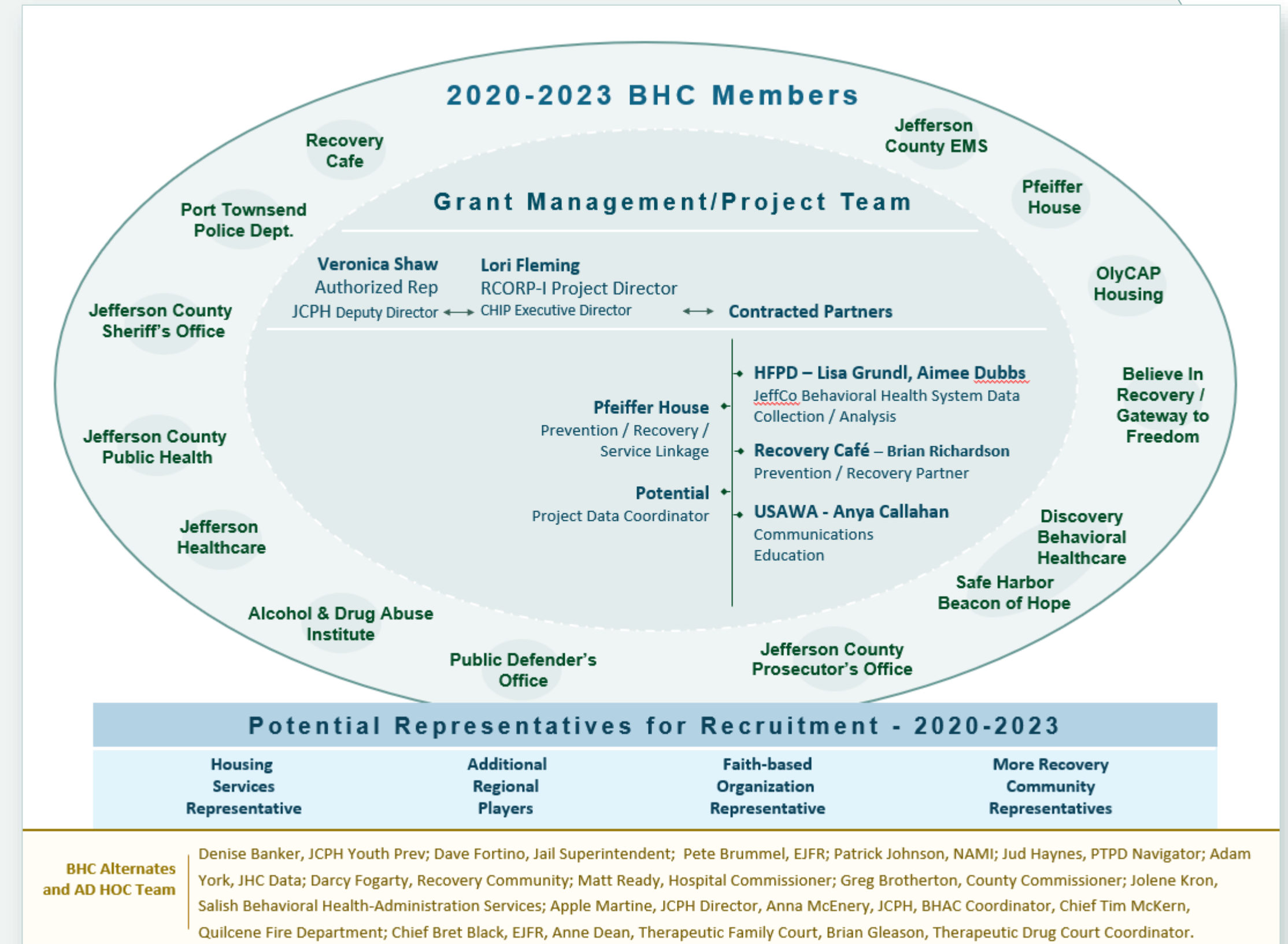
- **Youth Age:** Implement a coordinated framework of interventions that result in the elimination of adolescent suicide in Jefferson County every year starting in 2024.
- **Working Age:** 1) Improve Social Determinants of Health factors in Jefferson County. Increase housing capacity in Jefferson County by 5% by 2025 and reducing the percentage of residents below the poverty level by 2% by 2025 from 13% to 11%. 2) By end of 2022, address county resident service needs effectively. Develop detailed plan to address service gaps for Medical and Behavioral Health care in Jefferson County by 2023
- **Older Age:** Determine and address gaps in current system to support county seniors aging well. By 2023, develop and implement a plan that supports county seniors to maintain the highest functional level possible.



Overview: CHIP >> Behavioral Health Consortium (BHC)

CHIP: Procured \$1.3M in Planning and Implementation Grants to address 2016 Plan's Mental Health and SUD Priority

- **A Table:** Where Behavioral health-relevant agencies and representatives develop awareness of each other's roles and priorities; develop and execute collaborative, coordinated strategies toward the collective's goal of improved access to local behavioral health services and eliminating substance overdose deaths. ([See BHC's Org Chart](#))
- **Data:** Interagency leaders cooperatively share data at six month intervals for collective analysis and interpretation; develop/update collective baseline and insight to the opportunities and impacts of our local level's behavioral health crisis need and actions.





Overview: CHIP >> Behavioral Health Consortium (BHC)

CHIP: Procured \$1.3M in Planning and Implementation Grants to address 2016 Plan’s Mental Health and SUD Priority

- Strategic Action:** Facilitates cross-sector strategic planning, execution, tracking, and Plan updates
 Of note: CHIP threads continuity throughout leadership transitions; participated in ICG Panel; and led the two Housing Taskforce RFP Panels in 2021.
- Program Funding:** Grant funds support the BHC’s overhead costs, specific prevention, treatment, recovery programs, and service wraparound for Jefferson County residents through August 2023.

08/31/21 - Q4 Update: Jefferson County of (BHC) RCORP-I - Treatment Work Plan - Grant # GA1RH39564

TASK NAME	START	END	TEAM MEMBER	Yr1 Q1	Yr1 Q2	Yr1 Q3	Yr1 Q4	Yr2 Q1	Yr2 Q2	Yr2 Q3	Yr2 Q4	Yr3 Q1	Yr3 Q2	Yr3 Q3	Yr3 Q4
				YEAR 1 - 2020 - 2021				YEAR 2 2021 - 2022				Year 3 2022 - 2023			
Reduce treatment barriers treatment by supporting integrated treatment and recovery, including integration with behavioral health, criminal justice system, dentistry, and social services. Use approaches that minimize stigma/other barriers to care - Cont'd	Q1 2021	On-going													
g. Contribute to funding a Recovery Café Advocate role, => Work with individual to leverage Café as an intercept point to connect and integrate Recovery Café clients into wraparound health-related services, => explore e assessment services in a private room															
Y1Q4:Update:Trmt4g. - Some successes we've had this Q4: changing COVID rules and restrictions. Hired a Kitchen Lead started a partnership with Bayside Health Managers on-site at Recovery Café with housing applications.															
Activity Metrics: By 2022 decrease patients being seen by EMS and Law reduced rates of incarceration for th 10%, By 2025 reduced use of hospital health needs by 10%.															
Contractual	Yr1 Actual	Yr 2 ProposedA2	Yr 3 ProposedA2	Confirm total	Orig Amd#1 Total										
Wrap-around services South County	\$0.00	\$10,000.00	\$10,810.47	\$20,810.47	\$45,000.00										
OWL 360 - Pfeiffer House 2/2022 BudgetA2		\$23,500.00	\$23,500.00	\$47,000.00											
Communication: Website / Social Media	\$470.81	\$10,500.00	\$15,000.00	\$25,970.81	\$45,000.00										
YAB -MH Promotion/Suicide Prevention Programming		\$10,000.00	\$10,000.00	\$20,000.00											
Consultant (Rec Café)	\$23,617.47	\$40,691.27	\$40,691.27	\$105,000.00	\$105,000.00										
Harm Reduction / Stigma Campaign		\$10,495.97	\$10,500.00	\$20,995.97											
Youth Screening, Brief Intervention, and Referral to Treatment (YSBIRT)			\$6,000.00	\$6,000.00											



Overview: CHIP >> Behavioral Health Consortium (BHC)

CHIP: Procured \$1.3M in Planning and Implementation Grants to address 2016 Plan’s Mental Health and SUD Priority

- **Workflow:** Provides and facilitates a quarterly Behavioral Health Summit, led by Dr. David Carlbom, Jefferson County’s Medical Program Director, where county-wide EMS, Law Enforcement, Hospital Emergency Department and service provider representatives work through new workflow patterns in response to legislative changes (HB1310).
- One goal is a ratified Frontline Team Guide, outlining a collective approach to improve response to resident mental health and substance use disorder needs within the current legal frameworks.

Last Revised:	February, 2021	REVIEW:	
APPROVED:		Dr. David Carlbom, Medical Program Director	
APPROVED:		Laurie Tinker, E. Jefferson EMS Council Chair	

Purpose

To establish and ensure a consistent response to behavioral health emergencies throughout E. Jefferson County, emphasizing patient, provider, and community safety, while ensuring dignity for individuals experiencing behavioral challenges from mental health disorders or substance use disorders.

Individuals Impacted

- EMS Response Personnel
- E. Jefferson County Law Enforcement
- Behavioral Health Providers
- Receiving Medical Facilities

Policy

E. Jefferson County EMS providers will safely and appropriately assist patients experiencing behavioral health crises within their scope and training level. This assistance includes collaborating with Behavioral Health professionals and Law Enforcement to provide on-scene assessment, interventions, triage, transport to appropriate facilities, and specialized follow-up care where available.

This policy is not intended for use in the wilderness setting where resources are unavailable.

This policy is not intended to replace individual agency response policies and procedures but to provide guidance to member agencies and field providers.



Discussion



Acronym Sheet

BH – Behavioral Health

BHC – Behavioral Health Consortium

CAP – Communication Action Plan

CHA – Community Health Assessment

CHIP – Community Health Improvement Plan

DCR – Designated Crisis Responder

DUI – Driving Under the Influence

ED – Emergency Department

EJFR – East Jefferson Fire Rescue

EMS – Emergency Medical Services

JCPH – Jefferson County Public Health

JeffCo – Jefferson County

JHC – Jefferson Healthcare

HFPD – Health Facilities Planning and Development

Consultants

HRSA – Health Resources and Services Administration

ITA – Involuntary Treatment Assessment

MAT – Medically Assisted Treatment

MH – Mental Health

ODD – Opioid Use Disorder

PTPD – Port Townsend Police Department

RHNDP-P – Rural Health Network Development Program –
Planning (HRSA Grant Awarded 2018-2019)

RCORP-P – Rural Community Opioid Response Program –
Planning (HRSA Grant Awarded 2019-2020)

RCORP-I – Rural Community Opioid Response Program –
Implementation (HRSA Grant Awarded 2020-2023)

R.E.A.L. – Recovery, Empowerment, Advocacy, Linkage

SUD – Substance Use Disorder

TBH – To Be Hired

VOA – Volunteers of America – Crisis Line

Vol - Voluntary

Invol – Involuntary