



43-Unit Affordable Housing Project in Port Townsend, WA

Being Developed By:

Olympic Community Action Programs

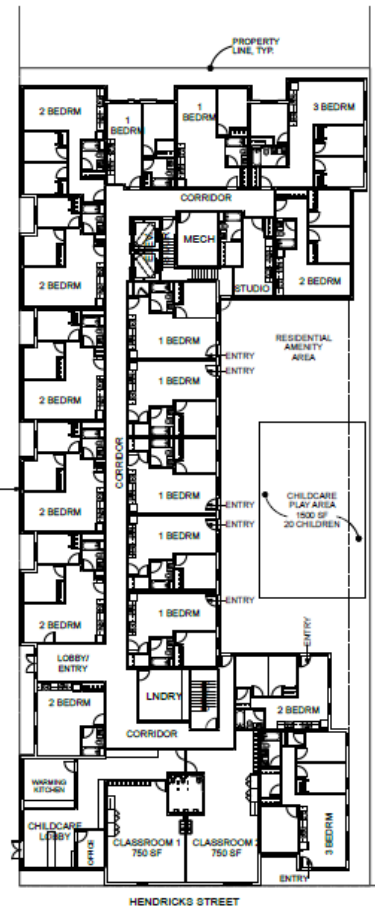
Your Community Action Agency for Jefferson and Clallam Counties

About the facility:

- ◆ Studio (6), One (18), Two (15) and Three (4) Bedroom Units for those with household incomes below 50% of the Area Medium Income for Jefferson County, WA
- ◆ 32 Section 8 vouchers are available through Peninsula Housing Authority
- ◆ Early Learning and Child Care facility on site (for resident and community use)
- ◆ Net Zero Energy Building meeting ultra high energy efficient standards
- ◆ On-site parking (one space per housing unit plus staff and guest parking)
- ◆ Sheltered courtyard and child play area
- ◆ Support services and special unit designations for: Discovery Behavioral Health, Safe Harbor Recovery Center, Dove House, Olympic Neighbors (3 units for developmentally disabled tenants, 5 units for tenants with chronic mentally illness and 2 units for victims of domestic violence.)

Project cost is currently estimated at \$15,452,692.00

- ◆ Local private support from Rotary, Kiwanis, and a private donor totaling \$50,000.00.
- ◆ County 1590 funds of \$599,000 and State Capital Budget Appropriation \$412,000.00.
- ◆ Local support of assistance in land acquisition and permitting and County/City 2060 Funds of \$75,000.00



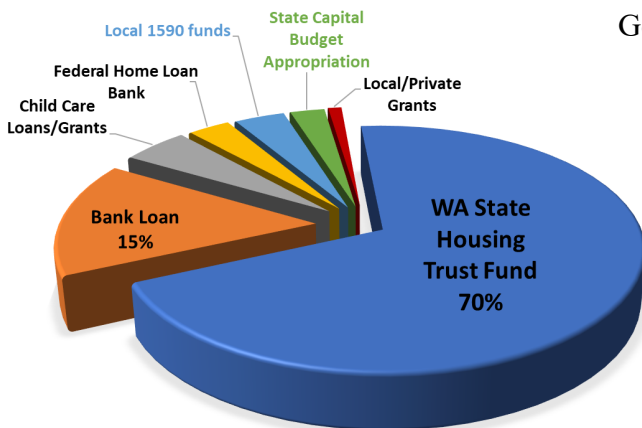
Development Team:

General Contractor: *Clark Construction*

Project Managers: *Ally Community Development*

Architects: *Third Place Design Collaborative with Richard Berg*

Construction Starts Summer 2021
Occupancy Expected Fall 2022



FINANCING SOURCES

To find out more information, or to donate,
please visit:

www.olycap.org/donations