



---

# South County Harm Reduction

November 15, 2022, 1pm

Jefferson County's Behavioral Health Consortium (BHC) is funded by  
HRSA's RCORP-Implementation Grant through August 2023

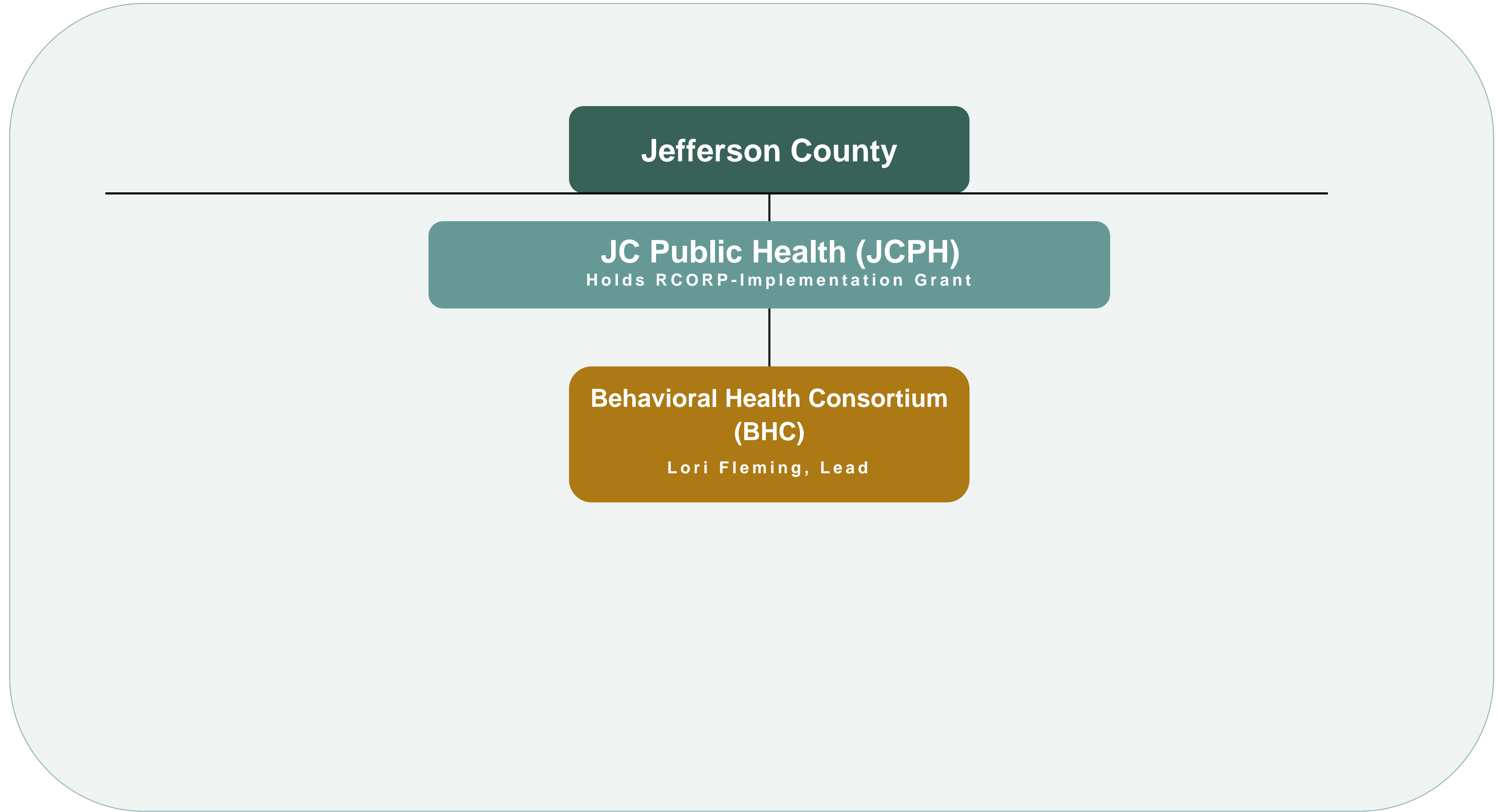


# Agenda – 11/15/22 - South County Harm Reduction

- Team Member Updates
- BHC Reporting Structure
- Overview of SCHR's First Two Years in South County
- Group Feedback: SCHR Milestones and Post Grant Vision
- Next Meeting: December 20<sup>th</sup>, 1pm



# Reporting Structure Update





# F O C U S

**Improve access to behavioral health services throughout Jefferson County**

**Prevention**

**Treatment**

**Recovery**

## Jefferson County's

### Behavioral Health Consortium Members

*Alcohol & Drug Abuse Institute*

*Believe In Recovery/Gateway to Freedom*

*Discovery Behavioral Healthcare / Safe Harbor*

*East Jefferson Fire Rescue*

*Jefferson County EMS Council*

*Jefferson County Prosecutor's Office*

*Jefferson County Public Health*

*Jefferson County Public Defender's Office*

*Jefferson County Sheriff's Office / Jail*

*Jefferson Healthcare*

*OlyCAP*

*OWL360 – Pfeiffer House/Nest*

*Port Townsend Police Department*

*Recovery Cafe*

*Ad Hoc and Alternate Members: Denise Banker, Community Health Director, JCPH; Dave Fortino, Jail Superintendent; Pete Brummel, EJFR; Patrick Johnson, NAMI; Jud Haynes, PTPD Navigator; Chief Tim Manly, Brinnon Fire Dept; Adam York, JHC Data; Darcy Fogarty, Recovery Community; Chief Tim McKern, Quilcene Fire Dept; Anya Callahan, Comm/Engagement, USAWA; Anna McEnery, JCPH, BH Coordinator; Matt Ready, Hospital Commissioner; Greg Brotherton, County Commissioner; Jolene Kron, Salish Behavioral Health-Administration Services; Apple Martine, JCPH Community Health Director; Cassidy Chang, Pop. Health Coordinator, JHC;*



BEHEALTHYJEFFERSON.COM



# Required Core Grant Activities



## Prevention

P.1

**Linguistic / Cultural Efforts to Reduce Stigma**

**Increase Naloxone Access and Training**

P.2

**Support Drug Take Back Programs**

P.3

**Support School Community Prevention Programs**

P.4

**Improve ID/Screening for SUD/OD; provide referrals to providers, harm reduction, early**

P.5

**intervention, treatment, and support**

## Treatment

T.1

**Screen/Provide/Refer Patients with infectious implications**

T.2

**Recruit/Train/Mentor interdisciplinary teams of SUD/OD Clinical and Service Providers**

T.3

**Increase # of providers and social service professionals who treat/identify SUD/OD through professional development and recruiting incentives**

T.4

**Reduce Treatment Barriers**

T.5

**Improve ID/Screening for SUD/OD; provide referrals to providers, harm reduction, early intervention, treatment, and support**

T.6

**Train Providers and Admin staff to optimize reimbursement for treatment through proper coding/billing across insurances to ensure service provider sustainability**

T.7

**Enable individuals, family and caregivers to find, access and navigate treatment for SUD/OD as well as home and community-based services and social supports**

## Recovery

P.1

**Train Providers and Admin staff to optimize reimbursement for treatment through proper coding/billing across insurances to ensure service provider sustainability**

P.2

**Enable individuals, family and caregivers to find, access and navigate treatment for SUD/OD as well as home and community-based services and social supports**

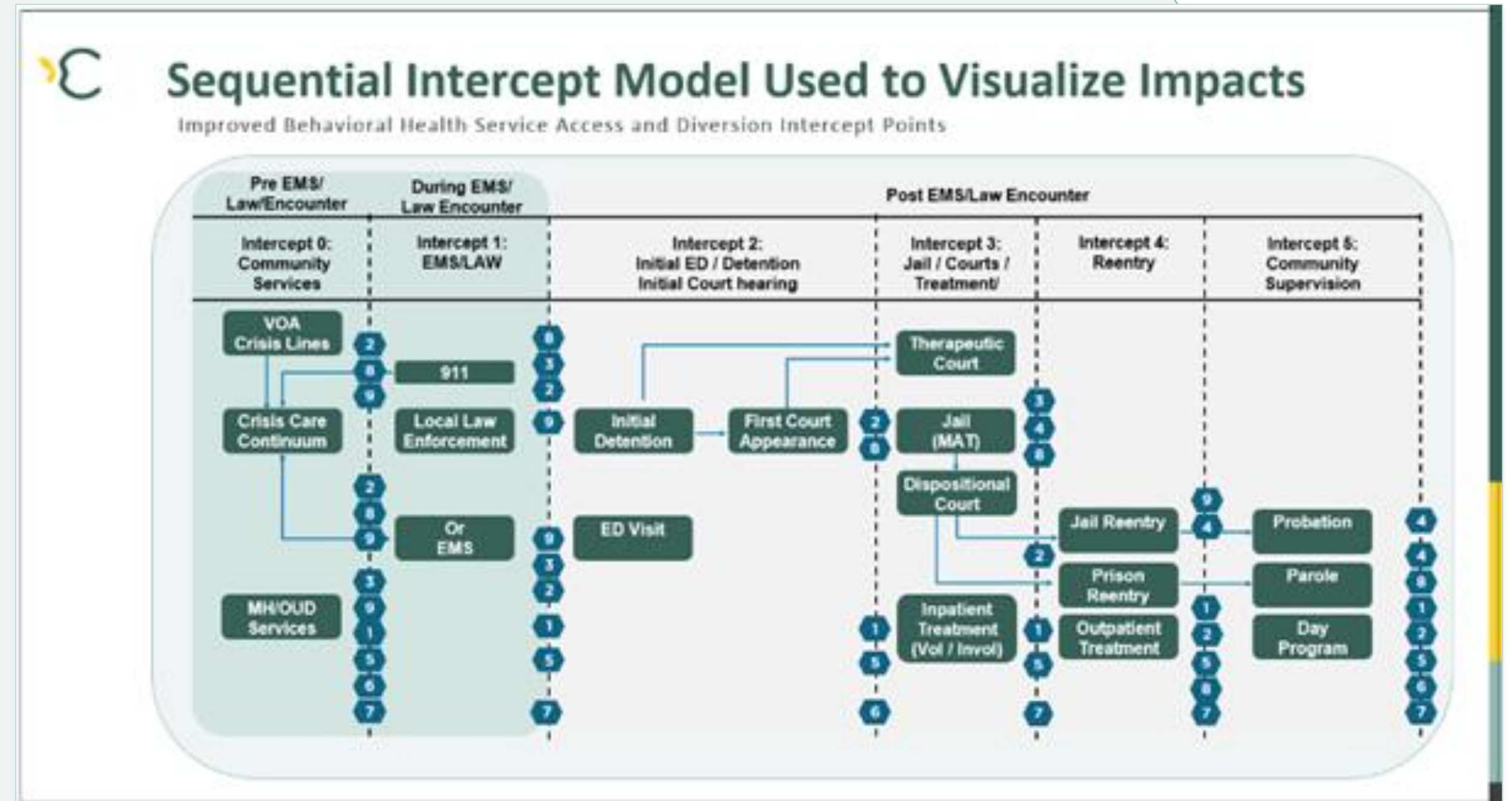
P.3

**Support development of recovery communities, recovery coaches, and recovery community organizations to expand the availability of and access to recovery support services**



# BHC Projects Update - November 2022

- ✓ 1. Increase Integration of Behavioral Health Therapy Provider and MAT Prescription
- ✓ 2. Gather/Analyze collective Data to provide baseline and feedback to measures implemented
- ✓ 3. Develop/maintain [online](#)/printed Resource Directory
- ✓ 4. Improve Jail-to-Community service connection
- ✓ 5. Fund Recovery Café for peer network development and recovery/prevention environment
- ✓ 6. Extend Harm Reduction Program Services into South County
- ✓ 7. Execute communication/education/integration efforts to address regional stigma
- ✓ 8. Coordinate and optimize navigator and care coordination services
- ✓ 9. Initiate collective case management for high utilizers of law enforcement/Hospital/EMS services





# SCHR's Collaboration – Current and Potential

- Nurtured a sustained connection to support south county -focused collaboration amongst key county agencies – *ALL of us!*
- Drug Take Back – *JCPH/Empowered Teen Coalition*
- Mobile Harm Reduction – *Believe In Recovery*
- REAL Team engagement – *DBH*
- Law Enforcement Awareness – *Sheriff's Office*
- Resource Card developed for service connection - *BHC*
- Naloxone Education and Distribution at Local Events – *BHC/Anya Callahan*
- Potential: Harm Reduction Supply Vending Machine – *DBH/JCPH/Brinnon FD*
- Potential: ?



# RCORP-I Program Funding Allocation

<b>PROGRAM</b>	<b>FUNDED 09/01/2020 - 08/2023</b>
RECOVERY CAFÉ / DOVE HOUSE	\$155,076.72
OWL 360 - PFEIFFER HOUSE / NEST	\$102,000.00
HFPD - DATA ANALYSIS & STRATEGY	\$ 33,940.00
ANYA CALLAHAN COMM/EDUCATION/ENGAGEMENT	\$ 20,445.00
COMMUNICATIONS WEBSITE TECH/GRAPHICS	\$ 22,000.00
SCHOOL BASED HEALTH CENTER (SBHC) YOUTH SCREENING, BRIEF INTERVENTION AND REFERRAL TO TREATMENT (YSBIRT)	\$ 6,000.00
SOUTH COUNTY HARM REDUCTION VENDING MACHINE PURCHASE AND INSTALLATION	\$ 25,000.00
<b>TOTAL ALLOCATED TO DATE</b>	<b>\$364,461.72</b>





# Feedback: Milestones and Post Grant Vision



Go to [this link](#)  
to provide feedback

## What Do You Think?

- What about your participation with the SCHR in the BHC has made you Mad, Sad, or Glad?
- What has been valuable about the SCHR?
- What needs to be improved? How should we improve it?
- What would you like to see the SCHR accomplish in our grant's final year to maximize impact on improving access to behavioral health in Jefferson County?
- What would you like the Jefferson County BHC-SCHR to be and/or do, once our current grant is completed in August 2023?



# Education and Engagement Update



BHC

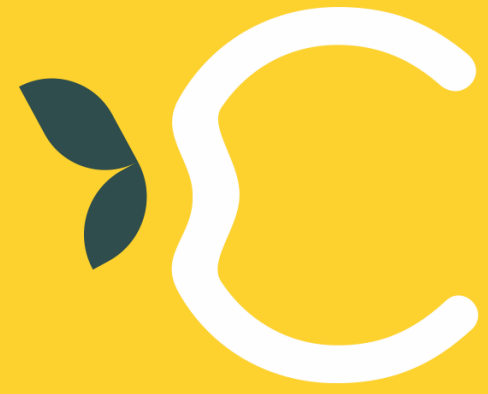
- 313 naloxone boxes distributed directly to community since April 2022
- Fentanyl strips now being distributed



# Next SCHR Meeting

Thursday, December 20th, 2022

@1pm



Thank you for your active  
support of this work

**We look forward to our continued collaboration  
and invite your feedback on today's meeting.**





# Acronym Sheet

**BH** – Behavioral Health

**BHC** – Behavioral Health Consortium

**CAP** – Communication Action Plan

**CHA** – Community Health Assessment

**CHIP** – Community Health Improvement Plan

**DCR** – Designated Crisis Responder

**DUI** – Driving Under the Influence

**ED** – Emergency Department

**EJFR** – East Jefferson Fire Rescue

**EMS** – Emergency Medical Services

**JCPH** – Jefferson County Public Health

**JeffCo** – Jefferson County

**JHC** – Jefferson Healthcare

**HFPD** – Health Facilities Planning & Development Consultants

**HRSA** – Health Resources and Services Administration

**ITA** – Involuntary Treatment Assessment

**MAT** – Medically Assisted Treatment

**MH** – Mental Health

**MOUD** – Medications for Opioid Use Disorder

**OUD** – Opioid Use Disorder

**PTPD** – Port Townsend Police Department

**PWUD** – People Who Use Drugs

**RHNDP-P** – Rural Health Network Development Program – Planning (HRSA Grant Awarded 2018-2019)

**RCORP-P** – Rural Community Opioid Response Program – Planning (HRSA Grant Awarded 2019-2020)

**RCORP-I** – Rural Community Opioid Response Program – Implementation (HRSA Grant Awarded 2020-2023)

**R.E.A.L.** – Recovery, Empowerment, Advocacy, Linkage

**SUD** – Substance Use Disorder

**TBH** – To Be Hired

**VOA** – Volunteers of America – Crisis Line

**Vol** - Voluntary

**Invol** – Involuntary



# Acronym Sheet

**BH** – Behavioral Health

**BHC** – Behavioral Health Consortium

**CAP** – Communication Action Plan

**CHA** – Community Health Assessment

**CHIP** – Community Health Improvement Plan

**DCR** – Designated Crisis Responder

**DUI** – Driving Under the Influence

**ED** – Emergency Department

**EJFR** – East Jefferson Fire Rescue

**EMS** – Emergency Medical Services

**JCPH** – Jefferson County Public Health

**JeffCo** – Jefferson County

**JHC** – Jefferson Healthcare

**HFPD** – Health Facilities Planning & Development Consultants

**HRSA** – Health Resources and Services Administration

**ITA** – Involuntary Treatment Assessment

**MAT** – Medically Assisted Treatment

**MH** – Mental Health

**MOUD** – Medications for Opioid Use Disorder

**OUD** – Opioid Use Disorder

**PTPD** – Port Townsend Police Department

**PWUD** – People Who Use Drugs

**RHNDP-P** – Rural Health Network Development Program – Planning (HRSA Grant Awarded 2018-2019)

**RCORP-P** – Rural Community Opioid Response Program – Planning (HRSA Grant Awarded 2019-2020)

**RCORP-I** – Rural Community Opioid Response Program – Implementation (HRSA Grant Awarded 2020-2023)

**R.E.A.L.** – Recovery, Empowerment, Advocacy, Linkage

**SUD** – Substance Use Disorder

**TBH** – To Be Hired

**VOA** – Volunteers of America – Crisis Line

**Vol** - Voluntary

**Invol** – Involuntary